



# Welcome

## to ExtremeZ-IP.

This guide provides the essential steps for setting up ExtremeZ-IP. For detailed File and Print Server configuration instructions, see the ExtremeZ-IP Users Manual PDF. You can find this manual in the ExtremeZ-IP program folder.

*If you are installing on a cluster, please refer to the post-installation steps in the manual.*

Copyright©1999 - 2009 Group Logic, Incorporated All Rights Reserved.

Group Logic™ and the Group Logic logo are registered trademarks of Group Logic, Inc..

All other trademarks are the property of their respective owners.

## Before You Begin

Verify your Server and Client computers meet the requirements for ExtremeZ-IP listed on the facing page.

Quit any running programs, including the Services control panel, virus-protection and anti-spyware software before starting the installation.

## ExtremeZ-IP System Requirements

The following are the minimum system requirements for ExtremeZ-IP File and Print Server. The recommended system requirements for a particular implementation or application can vary so please consult with the ExtremeZ-IP support team (support@grouplogic.com) if you have questions or need assistance.

**Windows Server Platforms:** 2008, 2003, 2000  
Windows Storage Server, Windows Powered NAS

**Windows Professional Platforms:** Vista, XP Pro, 2000 Pro, XP Embedded

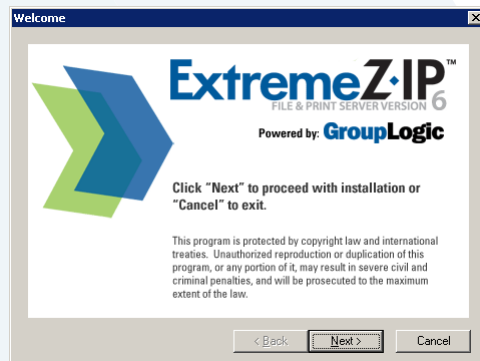
**Minimum Hardware Recommendation:**  
Processor: Pentium III  
Memory: 512MB

## Installing ExtremeZ-IP

### 1. Run the ExtremeZ-IP Installer.

*To install ExtremeZ-IP you must log in to Windows with Administrator privileges.*

### 2. Click **Next** to begin the installation.



3. Click **OK** to acknowledge you have shutdown other applications.
4. Click **Next** to install a licensed copy of ExtremeZ-IP and then click **Yes** to accept the Software License Agreement.
5. Enter your Name, Company and Serial Number. Click **Next**.
6. Click **Next** to accept the default Destination Folder.
7. Click **Next** to add program icons to the Start Menu.

*If you have a previous version of ExtremeZ-IP installed click **Yes** to replace the previous version.*

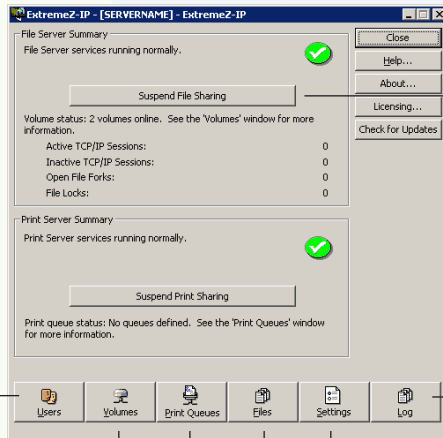
*Don't worry, it will not modify any existing settings.*

8. Click **Next** to share out the ExtremeZ-IP Print Support folder.
9. Click **Yes** to start ExtremeZ-IP automatically when Windows starts up.
10. Click **Next** to select default startup actions and then click **Finish**.

# Configuring Your First Shared Volume

## 1. Launch ExtremeZ-IP Administrator.

*The first time the ExtremeZ-IP Administrator is opened, it will prompt you to create shared volumes or migrate your existing SFM and SMB shares to ExtremeZ-IP. This can also be done any time from within the Volumes window.*



*Disconnect all clients and prevent new connections to the server.*

*Display a list of the connected users.*

*View ExtremeZ-IP related events from the Windows Event Viewer.*

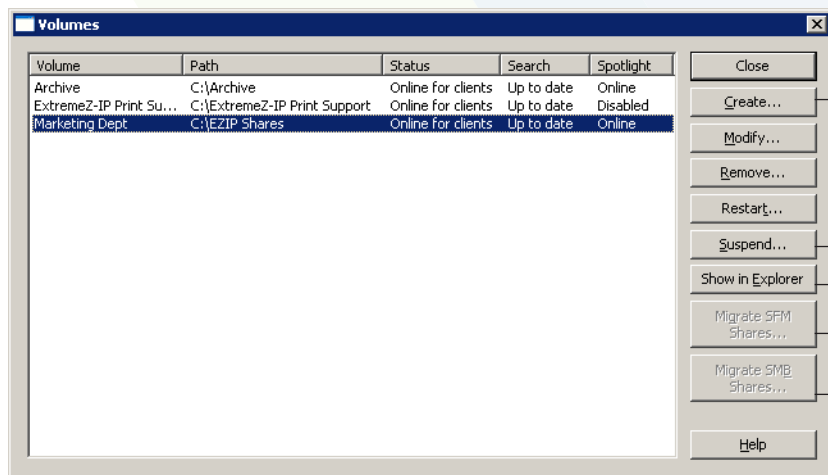
*Create or configure shared volumes.*

*Edit ExtremeZ-IP settings.*

*Create or administer Print Queues.*

*Display currently open files used by Macintosh clients.*

## 2. Click **Volumes**. The Volumes window will appear.



*Create a new shared volume from a folder.*

*Take a volume temporarily offline so that clients cannot connect to it.*

*Open the parent folder of the volume in Windows Explorer.*

*Migrate volumes that were originally created in Microsoft Services for Macintosh (SFM) to ExtremeZ-IP volumes.*

*Reshare all folders shared with Windows file sharing (SMB) with ExtremeZ-IP as well.*

3. Click **Create** to create a new volume. The Volume Properties window appears.

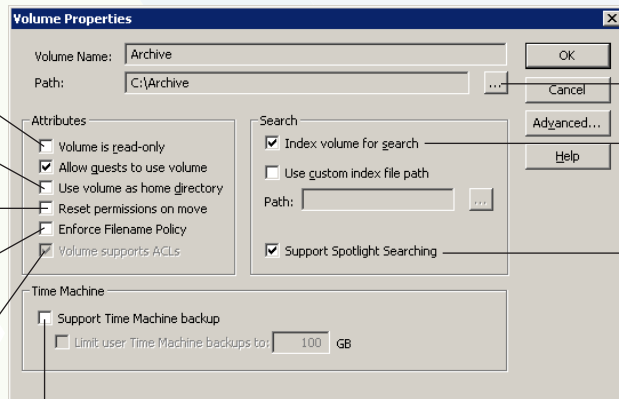
*Prevent writing to the volume.*

*Filter out all directories except for a user's home directory.*

*Resets the permissions on moved files and folders to inherit from the destination folder.*

*Enforces the filename policies that are defined in the global settings.*

*ACL support allows Mac OS X 10.4 and later clients to use Windows Access Control Lists.*



*Choose path of the folder to share.*

*Create a file name index that speeds up searches.*

*Enable Spotlight searching of file attributes and content*

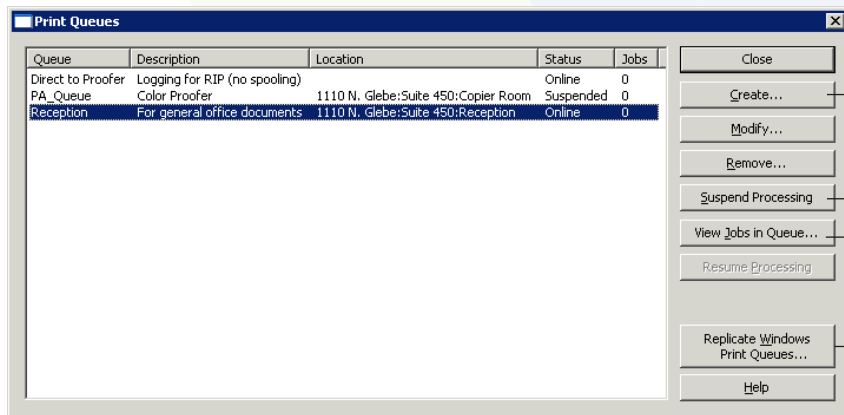
*Advertises the volume to Time Machine clients.*

4. Browse to the path of the folder you want to share.

5. Click **OK** to share the volume with ExtremeZ-IP.

## Configuring Your First Shared Print Queue

1. Click **Print Queues** in the Administrator main window.  
The Print Queues window will appear.



Create print queues.

When a queue is suspended jobs are accepted by the server however they are not sent to the printer until processing is resumed.

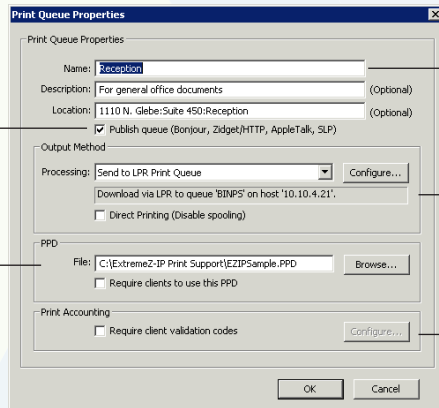
Open a window with a list of the pending jobs that allows you to start, stop, or reorder the print jobs.

Takes the existing Windows print queues and republishes them as ExtremeZ-IP queues.

2. Click **Create** to create a new Print Queue.
3. Enter a **Name** for the Print Queue.
4. Select a **Processing** method and enter the information required for the selected processing method.
5. Click **OK**.

*Whether the print queue should be discoverable by clients.*

*The PPD to be used by clients when printing to this queue.*



The image shows a 'Print Queue Properties' dialog box with the following fields and options:

- Name:** Reception
- Description:** For general office documents (Optional)
- Location:** 1110 N. Glebe Suite 450:Reception (Optional)
- ☒ Publish queue (Bonjour, Zidget/HTTP, AppleTalk, SLP)
- Output Method:**
  - Processing:** Send to LPR Print Queue (with a 'Configure...' button)
  - Download via LPR to queue 'BINPS' on host '10.10.4.21'.
  - ☐ Direct Printing (Disable spooling)
- PPD:**
  - File:** C:\ExtremeZ-IP Print Support\EZIPSample.PPD (with a 'Browse...' button)
  - ☐ Require clients to use this PPD
- Print Accounting:**
  - ☐ Require client validation codes (with a 'Configure...' button)

At the bottom are 'OK' and 'Cancel' buttons.

*The name that you will see when you print from a Macintosh.*

*Where ExtremeZ-IP will send the jobs after they are received.*

*Require the Macintosh client to supply job tracking information every time they print to this queue (refer to the ExtremeZ-IP manual for additional configuration).*



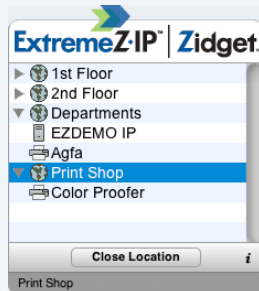
## That's It!

The ExtremeZ-IP server is set up and Macintosh clients can connect to the volume and printer you configured.

## The Optional ExtremeZ-IP Zidget™

If you would like to your Mac users to be able to take advantage of the optional ExtremeZ-IP Zidget™, you may need to add a DNS entry for `ExtremeZIPServerList.your-domain.com` that points to the ExtremeZ-IP server. More detailed instructions can be found in the manual.

Your users will then be able to install the Zidget from <http://ExtremeZIPServerList:8081> to browse for printers and file servers through this simple Dashboard widget.



## Additional Resources

Please refer to the ExtremeZ-IP Manual for more information about how to configure additional features such as:

**File Name Policies** – Policy enforcement keeps files that break naming policies out of important workflows, delivers improved compatibility between Macs, Windows and other platforms all without Administrator intervention.

**DFS Support** – ExtremeZ-IP can be configured to make a Microsoft Distributed File System (DFS) available to Mac OS X 10.5 or later clients.

**Print Accounting** – Increase your control over printing with ExtremeZ-IP Print Accounting, our print-tracking feature.

**Perfmon Counters** – Monitor the number of connected users or jobs being printed using the ExtremeZ-IP performance counters.

*For more advanced configuration refer to the additional resources below.*

### Download the Latest Release:

<http://www.grouplogic.com/files/glidownload/ezipreleases.cfm>

### Read the Manual:

<http://www.grouplogic.com/files/ez/EZIPManual.pdf>

### Submit a Support Request:

<http://www.grouplogic.com/support/requestform/>

### Search the Knowledgebase:

<http://www.grouplogic.com/knowledge/index.cfm>